

PERSPECTIVE

Roller & Panel Blinds



ARCHITECTS SPECIFIERS CONTRACTORS

A14



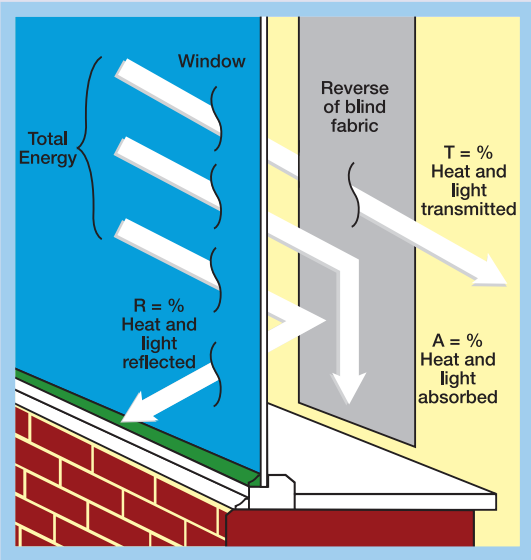
SOLAR, OPTICAL AND COLOUR FASTNESS PROPERTIES

PERSPECTIVE	SOLAR, OPTICAL PERFORMANCE CHART												
	SOLAR			OPTICAL			SC	CF	DIM out	UV block	SG	G TOT	
	T _s	R _s	A _s	T _o	R _o	A _o						DG	TG
Beige	19	66	15	16	73	11	0.36	6+	2	97	0.299	0.317	0.322
Black	3	3	94	3	3	94	0.97	6+	3	97	0.582	0.588	0.549
Grey	10	56	34	8	61	31	0.45	6+	3	97	0.342	0.363	0.373
Steel	12	42	46	8	41	51	0.59	6+	3	97	0.416	0.433	0.430
White	22	70	8	20	78	2	0.32	6+	2	97	0.283	0.298	0.314

T: % Transmittance R: % Reflectance A: % Absorption SC: Shading Co-efficient CF: Colour Fastness Dim out: 1= High light penetration, 4= Low light penetration, 5= Blackout
 UV Block: the percentage of UV light blocked by the fabric GTOT: SG = Single Glazed, DG = Double Glazed, TG = Triple Glazed, DG LE = Double Glazed low Emissivity.

SHADING CO-EFFICIENT

The solar heat gain with the blind at the window divided by the solar heat gain with no blind at the window. The lower the shading co-efficient, therefore, the higher the efficiency of the fabric. The test results in the table above have been achieved using a single 6mm glass glazing system.



FIRE PROTECTION

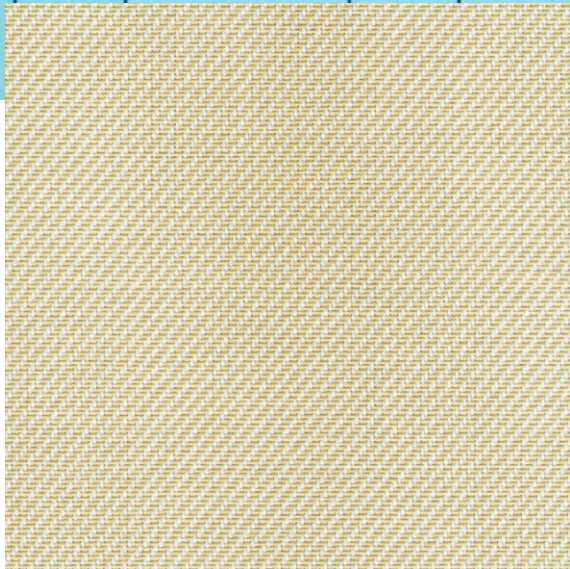
Perspective meets FR standard **BS 5867 Part 2 Type B**. Further information is available on request.

Blinds with Louvolite Performance fabrics supplied by:

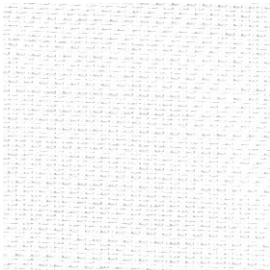
CI/SfB 1976 reference by SfB Agency		
(76.7)	X	

PERSPECTIVE

Performance Fabrics



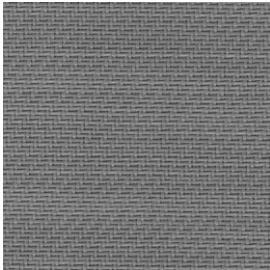
beige



white



grey



steel



black



roller blind



panel blind



roman blind



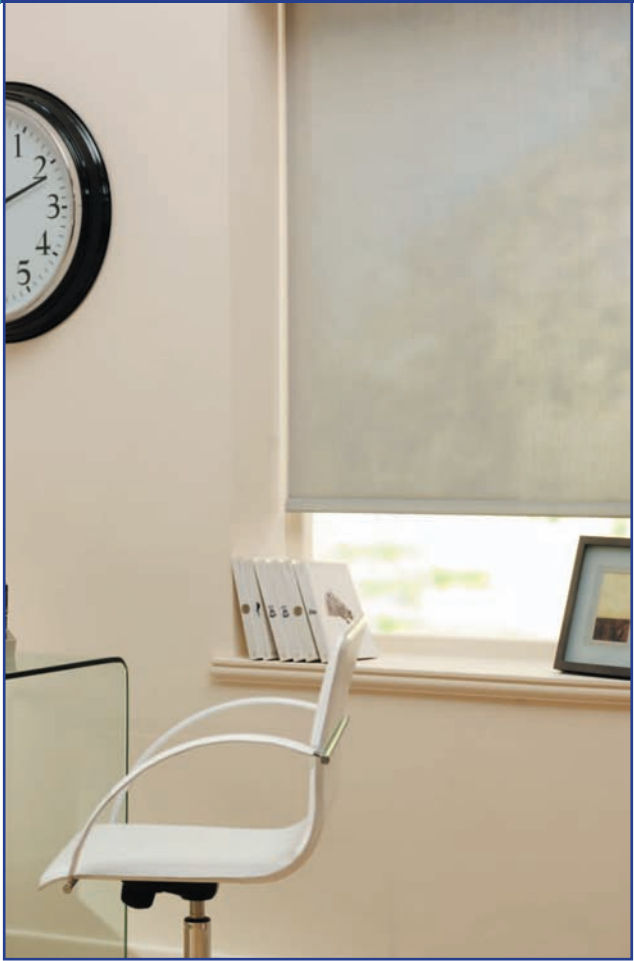
flame retardant



wipe clean



Greenshield



COLOUR RANGE	5
ROMAN/ROLLER BLIND WIDTH	2.5m (98.4")
FABRIC COMPOSITION	75% pvc 25% polyester
FABRIC WEIGHTS	430g/m ² (12.7oz/yd ²)
FLAMMABILITY STANDARDS	Complies with BS 5867 (Part 2, Type B)
OPENNESS	3%
COLOUR FASTNESS	Tested in accordance with BS EN ISO 105-B01:1999

GREENSHIELD:	Fabrics featuring the Greenshield mark have been tested to confirm no harmful VOC's or hazardous substances will be released to the environment in quantities that are recognised as potentially dangerous to occupants of dwellings or buildings.
CLEANING	Wipe clean
G TOT	A measure of total solar energy that passes through the glazing system and the blind fabric.
AVAILABILITY	Ex-stock
FABRIC SAMPLES	Available on request

Colours reproduced here may vary from the actual colours due to the limitations of the printing process. Great care has been taken to ensure that the fabric swatches and the information supplied are correct, however specifiers and customers are advised to check the suitability of materials before use.