

# CONTEX

## Performance Fabrics

### SOLAR, OPTICAL AND COLOUR FASTNESS PROPERTIES

CONTEX	SOLAR, OPTICAL PERFORMANCE CHART													
	SOLAR			OPTICAL			SC	CF	DIM out	UV block	SG	G TOT		
T <sub>s</sub>	R <sub>s</sub>	A <sub>s</sub>	T <sub>0</sub>	R <sub>0</sub>	A <sub>0</sub>	DG						TG	DG LE	
Apollo	41	54	5	41	54	5	0.48	6	1	74	0.429	0.416	0.408	0.446
Galaxy	15	72	13	12	78	10	0.30	6	3	74	0.457	0.440	0.428	0.467
Lunar	42	55	3	43	57	0	0.47	6+	1	71	0.426	0.412	0.404	0.441
Meteor	41	51	8	40	50	10	0.51	6	1	71	0.443	0.429	0.419	0.458
Neptune	33	47	20	27	41	32	0.55	5/6	2	85	0.447	0.439	0.432	0.473

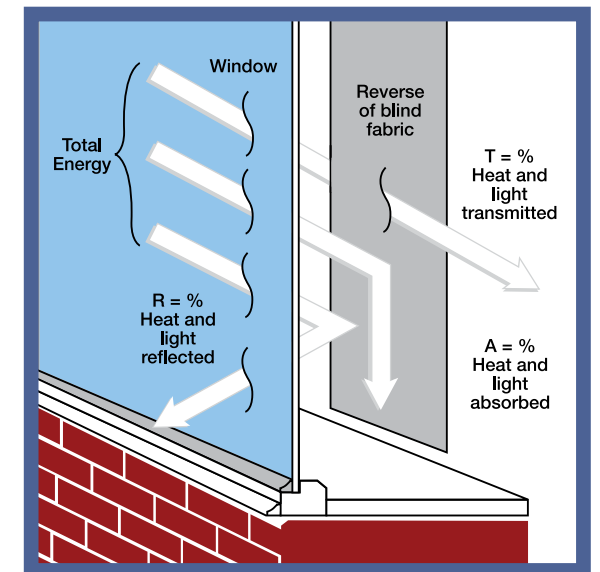
T: % Transmittance R: % Reflectance A: % Absorption SC: Shading Co-efficient CF: Colour Fastness Dim out: 1= High light penetration, 4= Low light penetration, 5= Blackout  
 UV Block: the percentage of UV light blocked by the fabric G TOT: SG = Single Glazed, DG = Double Glazed, TG = Triple Glazed, DG LE = Double Glazed Low Emissivity.

#### SHADING CO-EFFICIENT

The solar heat gain with the blind at the window divided by the solar heat gain with no blind at the window. The lower the shading co-efficient, therefore, the higher the efficiency of the fabric. The test results in the table above have been achieved using a single 6mm glass glazing system.

#### G TOT

A measure of total solar energy that passes through the glazing system and the blind fabric.



#### FIRE PROTECTION

Contex meets FR standard BS 5867 Part 2 Type B. Further information is available on request.

Blinds with Louvolite® Performance fabrics supplied by:

CI/SfB 1976 reference by SfB Agency			
(76.7)	X		



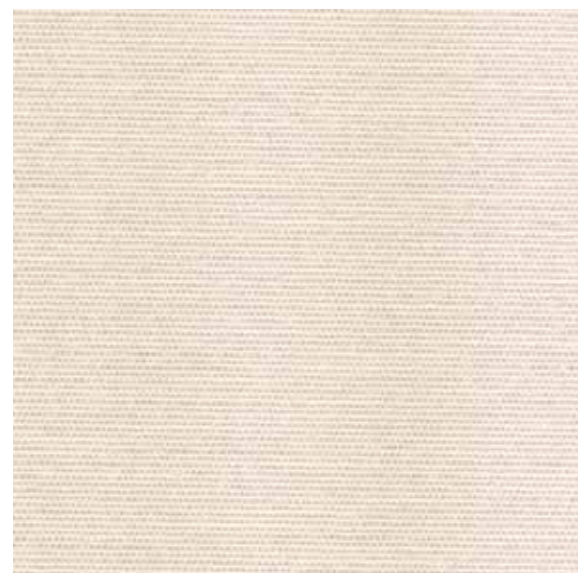
# A4



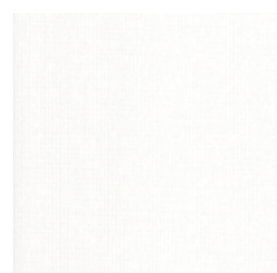


# CONTEX

Performance Fabrics



Apollo



Lunar



Galaxy



Neptune



Meteor



Vertical Blind



Roller Blind



Roman Blind



Panel Blind



Dim Out



Flame Retardant



Wipe Clean



Greenshield



**Ultra Fresh\***

Ultra-Fresh is a registered trademark of Thomson Research Associates, Canada.



<b>Colour Range</b>	5	<b>Greenshield</b>	Fabrics featuring the Greenshield mark have been tested to confirm no harmful VOC's or hazardous substances will be released to the environment in quantities that are recognised as potentially dangerous to occupants of dwellings or buildings.
<b>Louvre Widths Available</b>	89mm (3½") 127mm (5") other widths available on request	<b>Cleaning</b>	Wipe clean
<b>Roman / Roller Blind Width</b>	2.00m (78")	<b>Availability</b>	Ex-stock
<b>Fabric Composition</b>	100% glass fibre	<b>Fabric Samples</b>	Available on request
<b>Fabric Weights</b>	215g/m <sup>2</sup> (6.3oz/yd <sup>2</sup> )		
<b>Flammability Standards</b>	Complies with BS 5867 (Part 2, Type B)		
<b>Colour Fastness</b>	Tested in accordance with BS EN ISO 105-B01:1999		
<b>Ultra-Fresh*</b>	 An Ultra-Fresh* treated fabric that kills MRSA on contact. Also contains effective antibacterial and antifungal properties to preserve fabric freshness.		