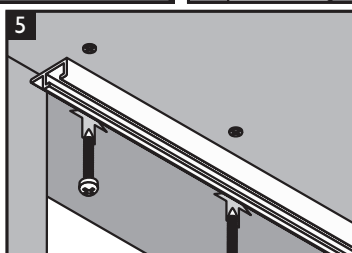
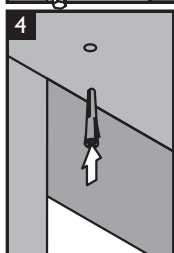
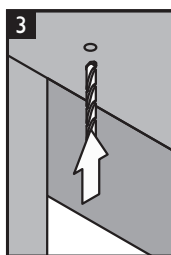
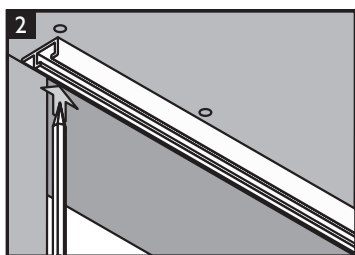
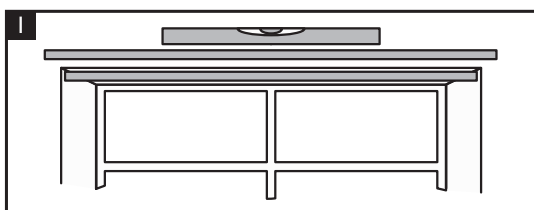
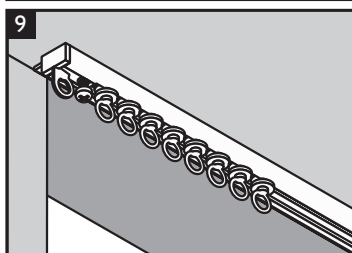
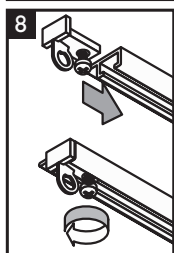
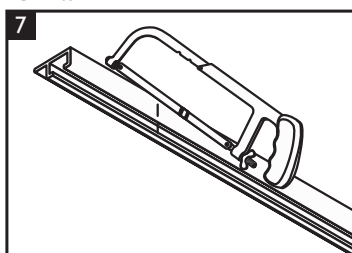
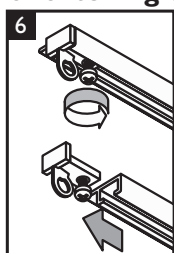


## Discreet

### Top Fix Fitting Instructions



### Shortening the Rail



#### Safety

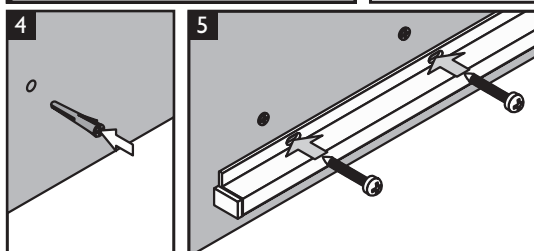
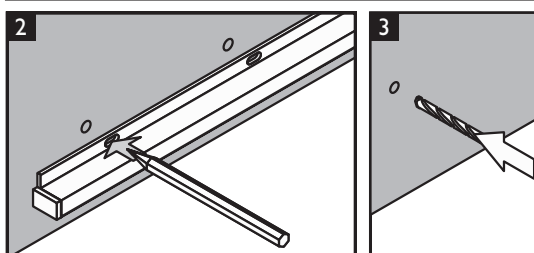
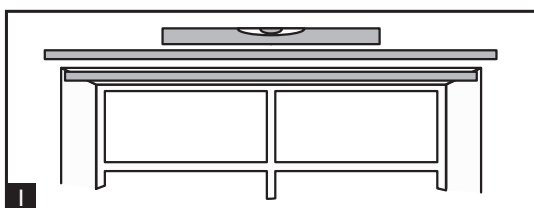
- Only use a step ladder or stable chair to reach the fixing height.
- Do not over reach. Always move the stepladder or chair, so that you are in a safe working position.
- Do not hold or lean on the track to support your weight.
- Use two people for the installation of longer tracks.
- Take care when using power tools, use of a Residual Current Device (RCD) is recommended.
- Always wear eye protection when drilling.
- Beware of hidden pipe runs and cables.

**Integra Products Ltd,**  
Eastern Avenue, Lichfield, Staffordshire WS13 7SB

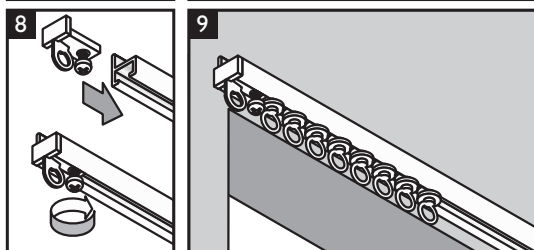
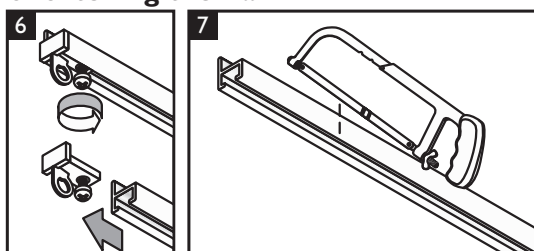
- tel: +44 (0)1543 267100 • fax: +44 (0)1543 267105
- email: [cus.care@integra-products.co.uk](mailto:cus.care@integra-products.co.uk)
- web: [www.integra-products.co.uk](http://www.integra-products.co.uk)

## Discreet

### Face Fix Fitting Instructions



### Shortening the Rail



#### Safety

- Only use a step ladder or stable chair to reach the fixing height.
- Do not over reach. Always move the stepladder or chair, so that you are in a safe working position.
- Do not hold or lean on the track to support your weight.
- Use two people for the installation of longer tracks.
- Take care when using power tools, use of a Residual Current Device (RCD) is recommended.
- Always wear eye protection when drilling.
- Beware of hidden pipe runs and cables.

**Integra Products Ltd,**  
Eastern Avenue, Lichfield, Staffordshire WS13 7SB

- tel: +44 (0)1543 267100 • fax: +44 (0)1543 267105
- email: [cus.care@integra-products.co.uk](mailto:cus.care@integra-products.co.uk)
- web: [www.integra-products.co.uk](http://www.integra-products.co.uk)